

Challenge to the World Largest Magnet for ITER

Masahiko INOUE



Our Technologies, Your Tomorrow

December 3, 2013
GRIMALDI FORUM, Monaco

- 1884**
Founding. Leased the Nagasaki Shipyard from the government, and started a shipbuilding business
- 1887**
Launched Japan's first steel steamship, the "Yugao Maru"
- 1918**
Built passenger car, "Mitsubishi Automobile Model A"
- 1929**
Launched the passenger ship "Asama Maru"
- 1946**
Shifting to civilian production after the war, produced the Silver Pigeon motor scooters
- 1963**
First flight of the MU-2 turboprop business aircraft
- 1975**
Successfully launched the first N-I Launch Vehicle
- 1983**
Delivered the first MOSS type LNG tanker
- 1985**
Delivered the world's largest combined cycle power plant (Tohoku Electric Power, Higashi Niigata No. 3, unit 2; 545,000 kW)
- 1989**
Completed the "Shinkai 6500," the deepest-diving submersible research vehicle



- 1990**
Completed Japan's largest luxury cruise ship, the "CRYSTAL HARMONY"
- 1997**
Completed of the G-Series 1,600°C class gas turbines
- 1999**
"Tatsuta Bridge," at that time the world's largest cable-stayed bridge, opened
- 2001**
Successfully launched first H-IIA Launch Vehicle
- 2004**
Developed the world's first high precision four dimensional radiation treatment devices
- 2007**
Authorized offer of MRJ and launched marketing activities to potential customers
- 2008**
Practical use of high efficiency eco-friendly Integrated Gasification Combined Cycle (IGCC) first among the world
- 2009**
Successful launch of the first H-IIB rocket with the greatest lift capacity in Japan
Dubai Metro Red Line, the first urban rail system in the GCC region opened. The world's longest driverless rail system
- 2010**
Conceptual design of the "MALS-14000CS" container ship, incorporating the latest CO₂-reducing technologies including our unique Mitsubishi Air Lubrication System (MALS), has been completed
- 2011**
A "J-Series" gas turbine, with the world's highest efficiency, achieved the world's highest turbine inlet temperature of 1,600°C during the verification test

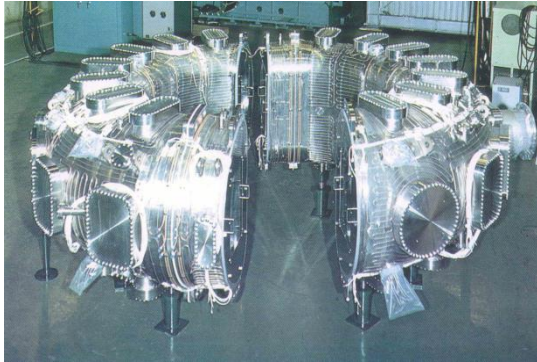


Minato-ku,

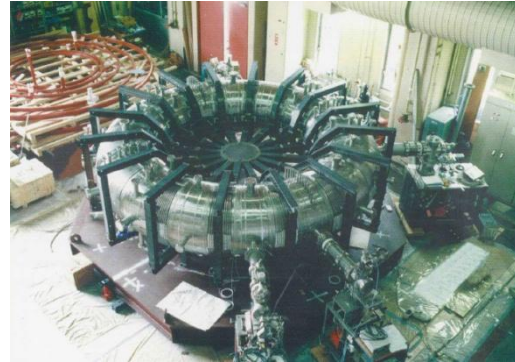
1

d)

Since 1980's, MHI has contributed to Worldwide Fusion Programs



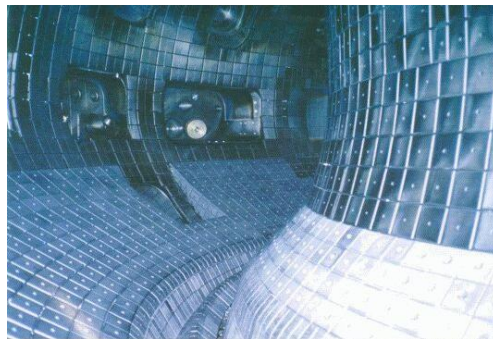
**Vacuum Vessel of
JFT-2M Tokamak System**



**Vacuum Vessel of TPE-RX
Reversed-Field Pinch System**



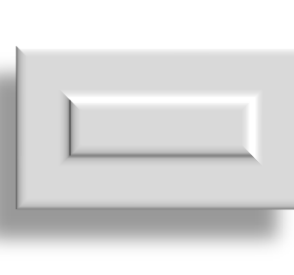
**Fuel Clean-up System
For TSTA**



**Vacuum Vessel of JT-60
Upgrade Tokamak System and
W-shape Divertor System**



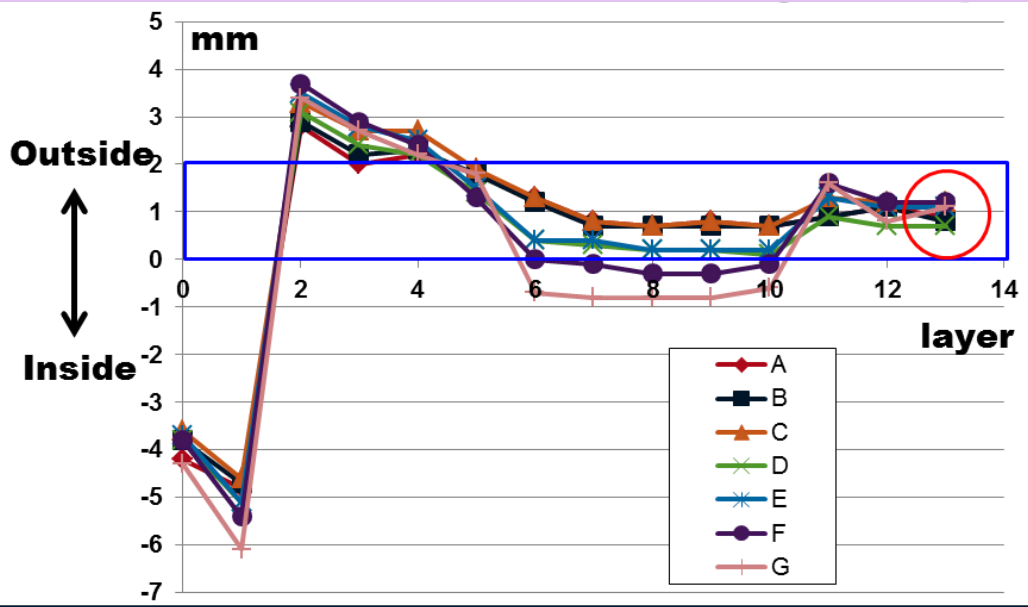
World Largest Challenge Started



Largest Needs Most Sophisticated



Welders Fight with Deformation



Road to the Superhuman Feat

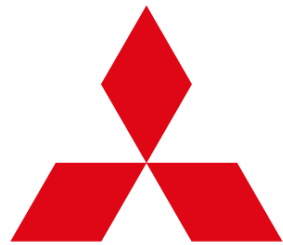
Skill Transferring & Training for Days



The winning steel structure







MITSUBISHI
HEAVY INDUSTRIES, LTD.

Our Technologies, Your Tomorrow

A thick red horizontal line that starts under the first word of the slogan and curves upwards to the right, ending under the second word.